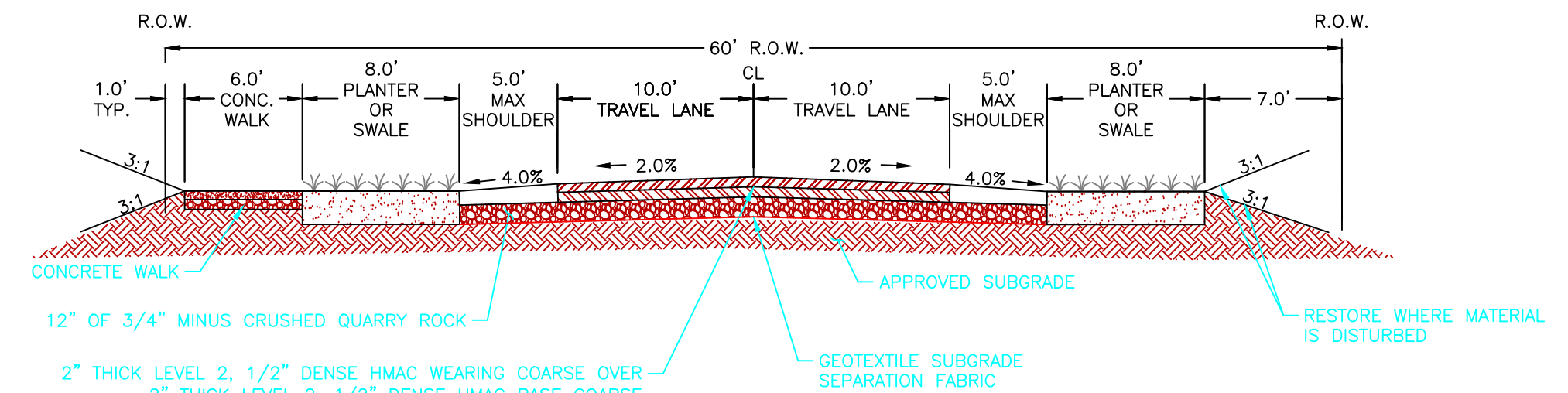
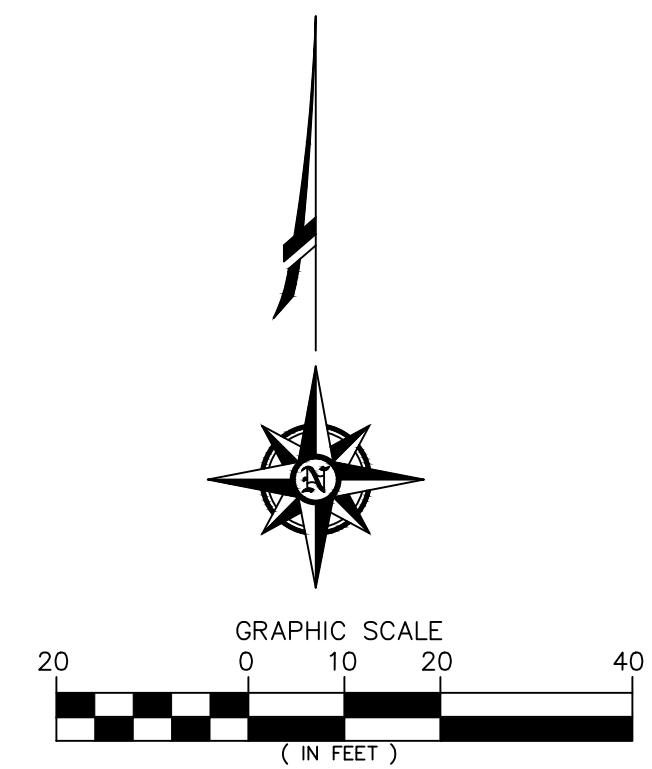
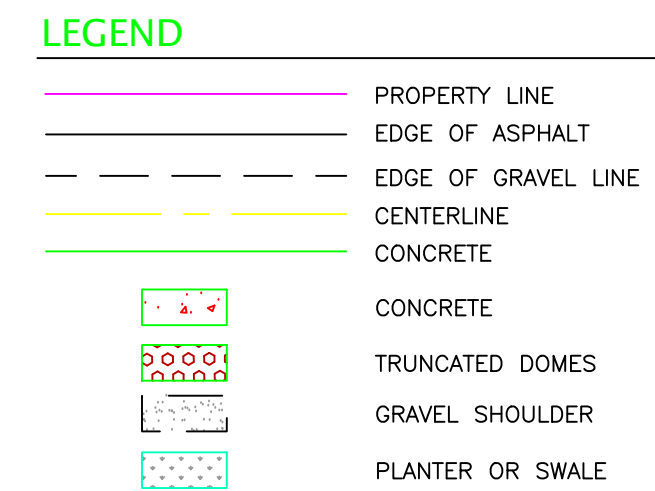
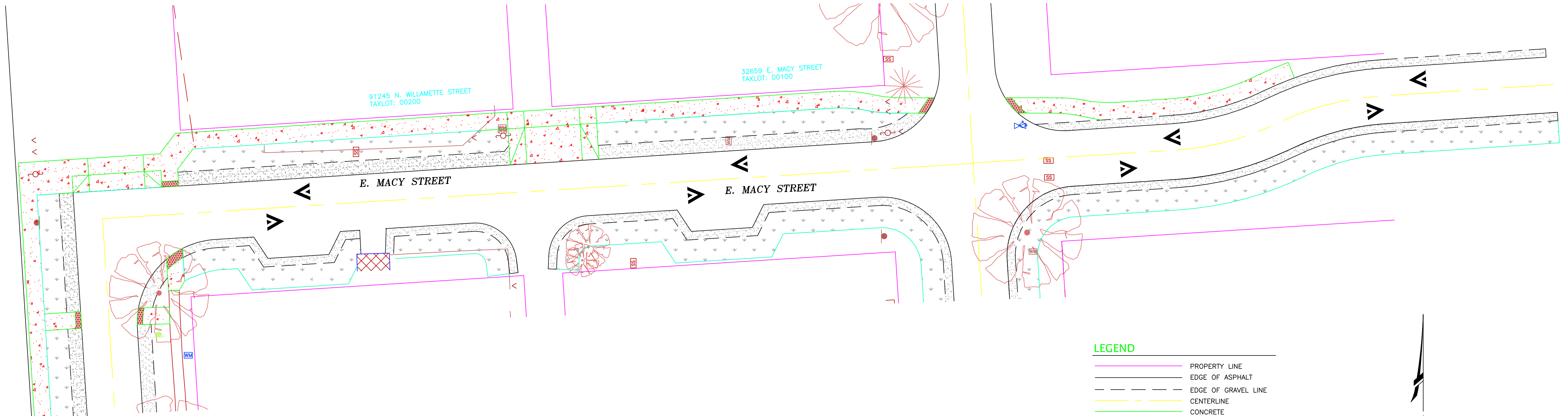
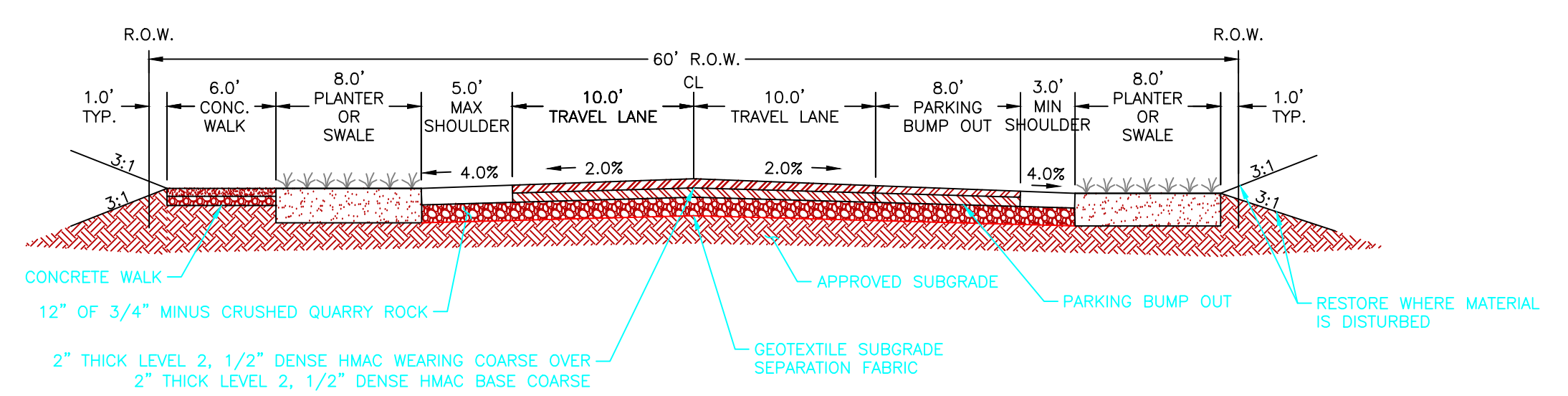


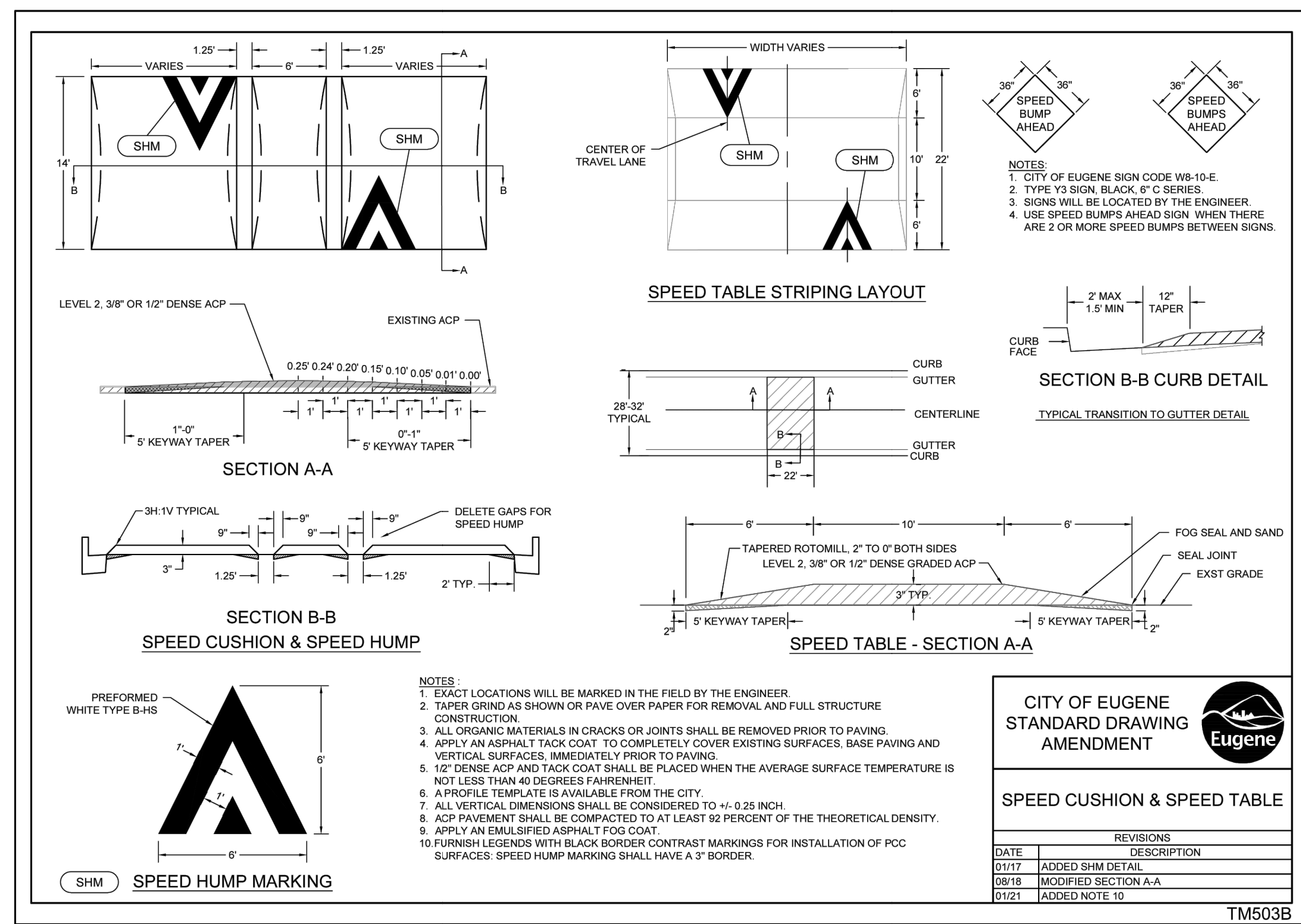
# OPTION A: SIDEWALKS & SPEED CUSHIONS



**E. MACY STREET – TYPICAL SECTION**  
(NOT TO SCALE)

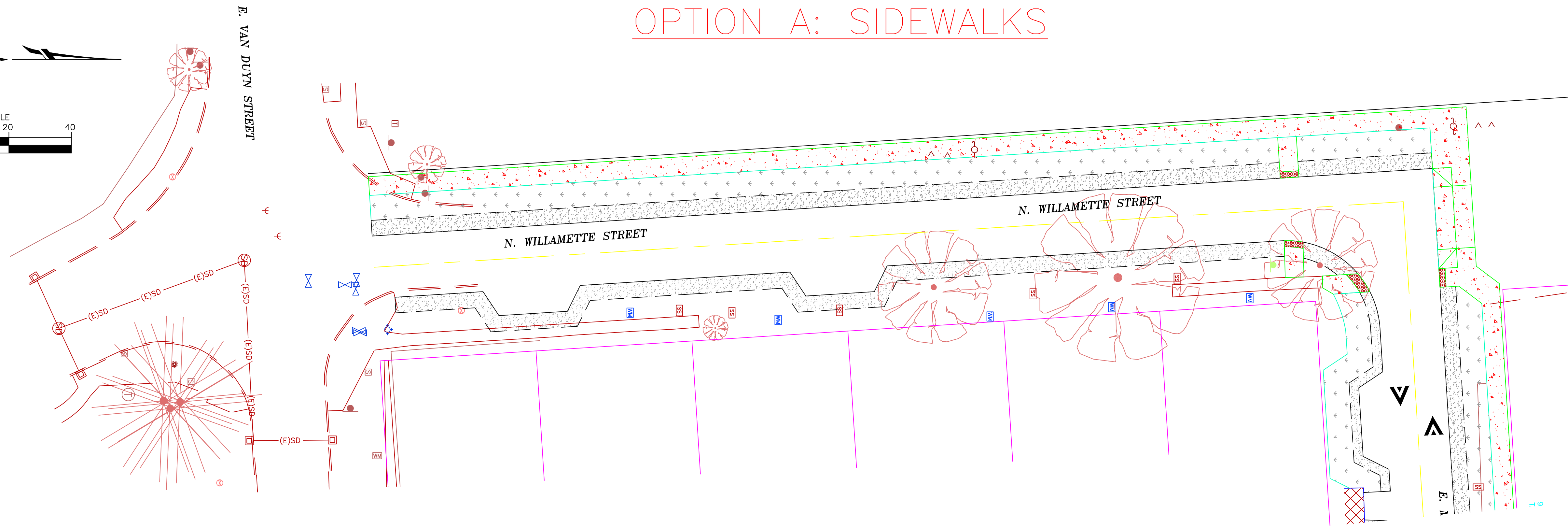
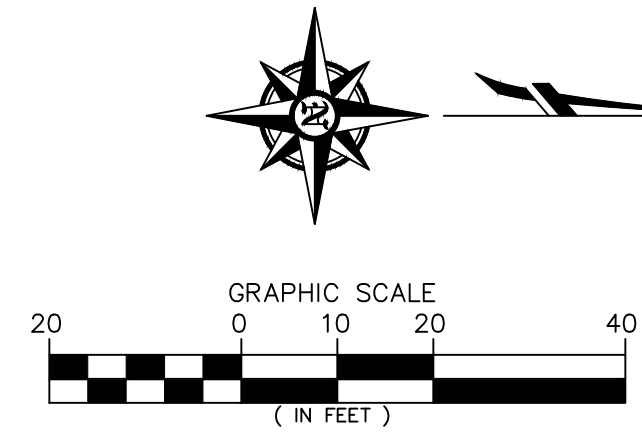


**E. MACY STREET – TYPICAL SECTION AT BUMPOUTS**  
(NOT TO SCALE)



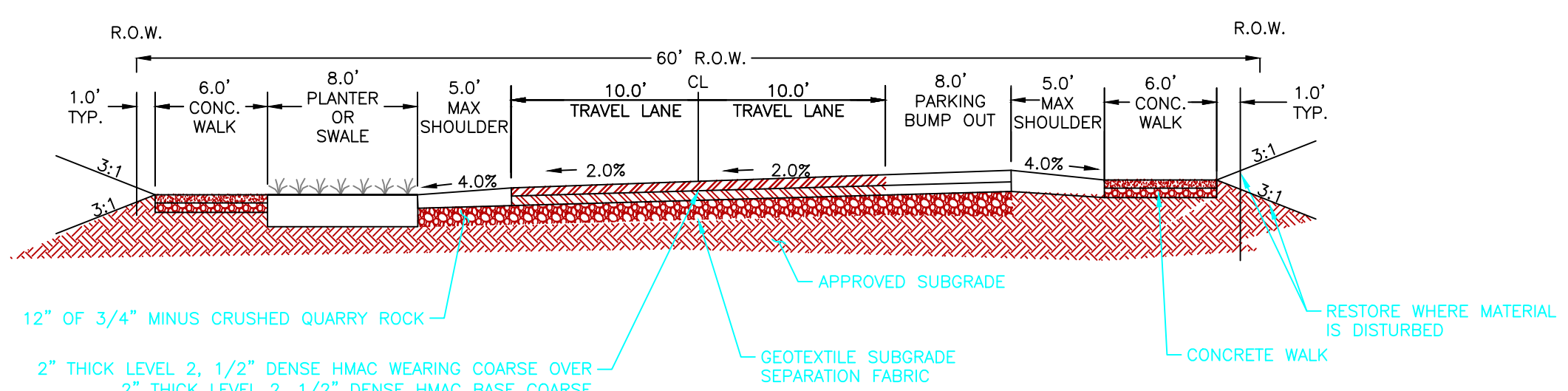
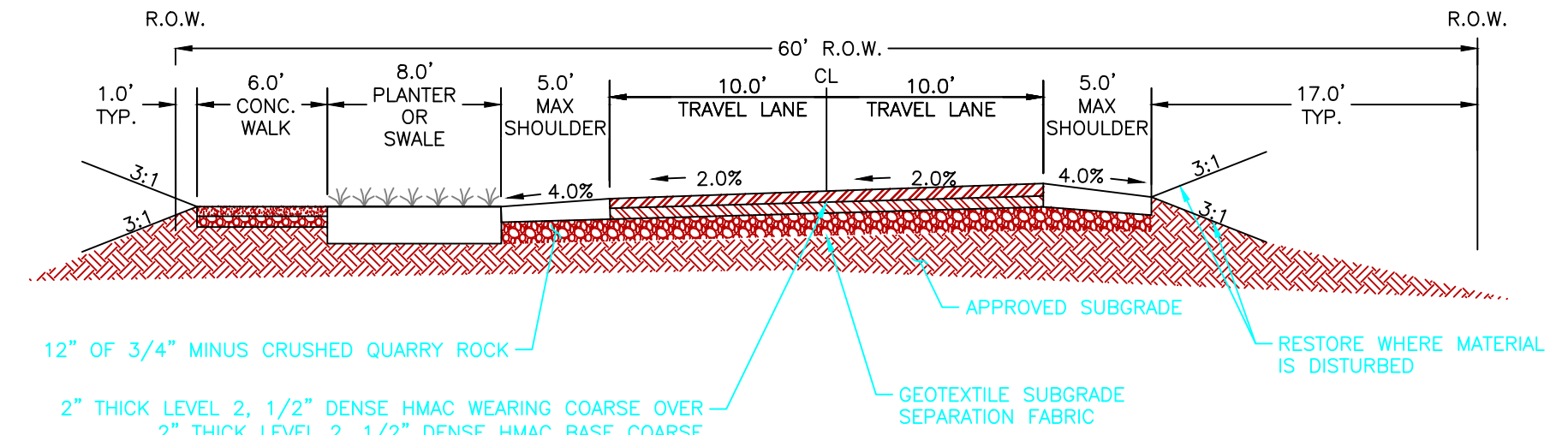
Z:\2021\21-004B Coburg Harrison & Macy Street Waterline Replacement\Drawings\21-004B\_Harrison & Macy St\_Speed Cushions.dwg 1/24/2023 5:10 PM JLB

# OPTION A: SIDEWALKS



**LEGEND**

	PROPERTY LINE
	EDGE OF ASPHALT
	EDGE OF GRAVEL LINE
	CENTERLINE
	CONCRETE
	CONCRETE
	TRUNCATED DOMES
	GRAVEL SHOULDER
	PLANTER OR SWALE



project title:  
**N. WILLAMETTE, E. MACY, & N. HARRISON**  
**STREET IMPROVEMENT OPTIONS**  
 CITY OF COBURG  
 HARRISON AND MACY STREET  
 COBURG, OREGON

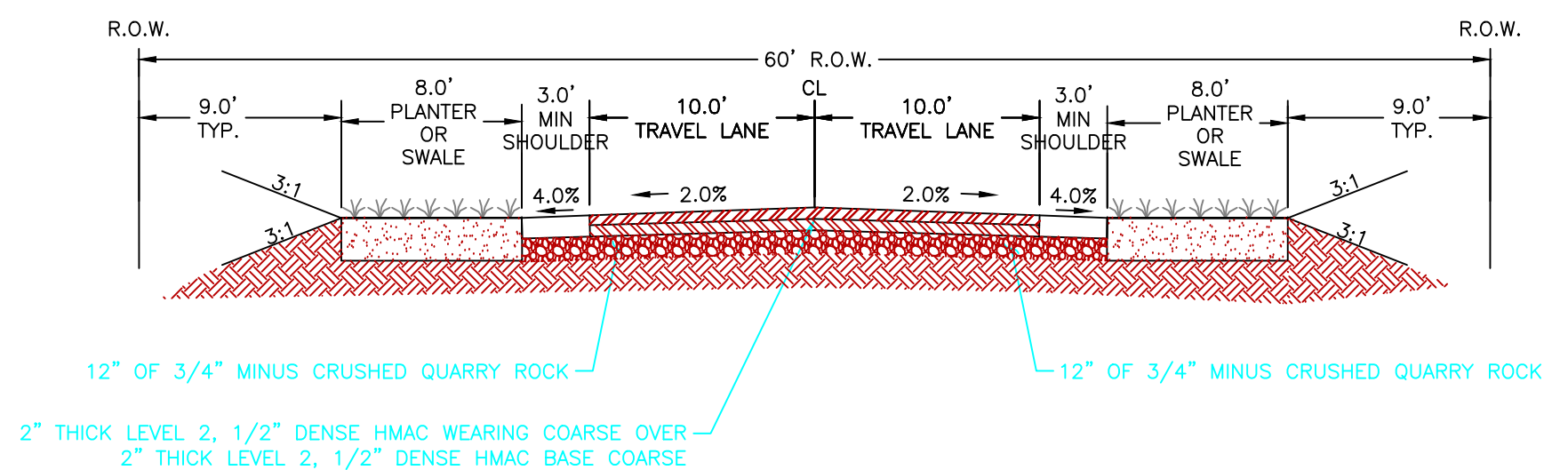
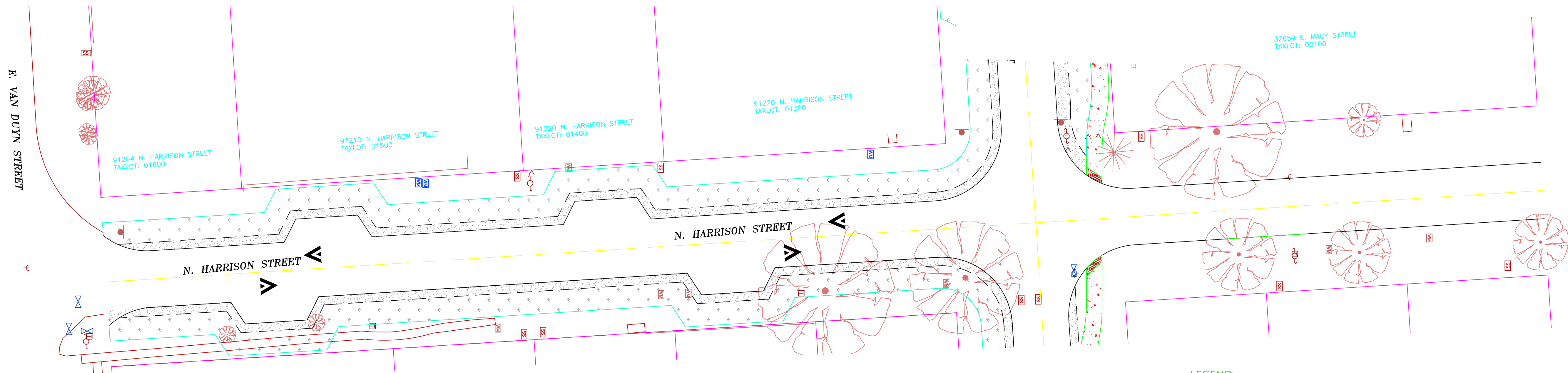
revisions:  
 date: JANUARY 24, 2023  
 drawn by: VJ  
 designer: JLB  
 project no: 21-004B

**STREET IMPROVEMENTS**  
**OPTION A**

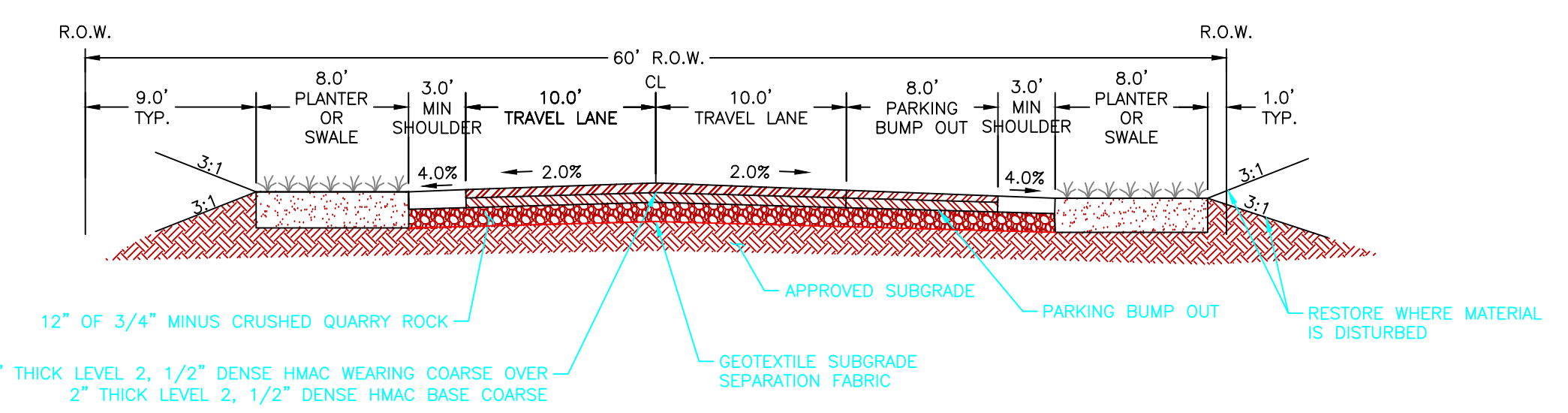
sheet:  
**C1.1**

Z:\2021\21-004B Coburg Harrison & Macy Street Waterline Replacement\Drawings\21-004B\_Harrison & Macy St\_Sidewalk Options.dwg 1/24/2023 5:10 PM JLB

# OPTION A: SPEED CUSHIONS

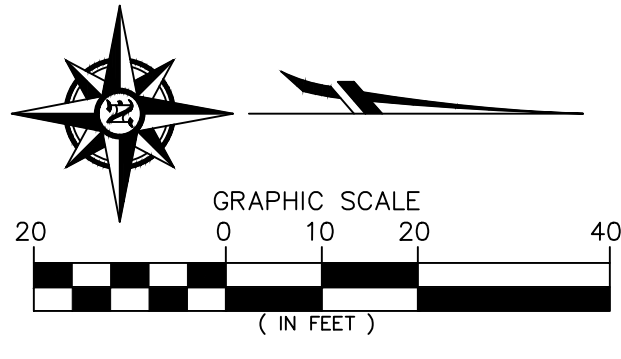


**N. HARRISON STREET – TYPICAL SECTION**  
(NOT TO SCALE)



**N. HARRISON STREET – TYPICAL SECTION AT BUMPOUTS**  
(NOT TO SCALE)

- LEGEND**
- PROPERTY LINE
  - EDGE OF ASPHALT
  - EDGE OF GRAVEL LINE
  - CENTERLINE
  - CONCRETE
  - CONCRETE
  - TRUNCATED DOMES
  - GRAVEL SHOULDER
  - PLANTER OR SWALE



**SPEED HUMP MARKING**

**NOTES:**

- EXACT LOCATIONS WILL BE MARKED IN THE FIELD BY THE ENGINEER.
- TAPER GRIND AS SHOWN OR PAVE OVER PAPER FOR REMOVAL AND FULL STRUCTURE CONSTRUCTION.
- ALL ORGANIC MATERIALS IN CRACKS OR JOINTS SHALL BE REMOVED PRIOR TO PAVING.
- APPLY AN ASPHALT TACK COAT TO COMPLETELY COVER EXISTING SURFACES. BASE PAVING AND VERTICAL SURFACES, IMMEDIATELY PRIOR TO PAVING.
- 1/2" DENSE ACP AND TACK COAT SHALL BE PLACED WHEN THE AVERAGE SURFACE TEMPERATURE IS NOT LESS THAN 40 DEGREES FAHRENHEIT.
- A PROFILE TEMPLATE IS AVAILABLE FROM THE CITY.
- ALL VERTICAL DIMENSIONS SHALL BE CONSIDERED TO +/- 0.25 INCH.
- ACP PAVEMENT SHALL BE COMPACTED TO AT LEAST 92 PERCENT OF THE THEORETICAL DENSITY.
- APPLY AN EMULSIFIED ASPHALT FOG COAT.
- FURNISH LEGENDS WITH BLACK BORDER CONTRAST MARKINGS FOR INSTALLATION OF PCC SURFACES. SPEED HUMP MARKING SHALL HAVE A 3" BORDER.

**SPEED TABLE STRIPING LAYOUT**

**SECTION B-B CURB DETAIL**  
TYPICAL TRANSITION TO GUTTER DETAIL

**SECTION A-A**  
**SECTION B-B**  
**SPEED CUSHION & SPEED HUMP**

**SECTION A-A**  
**SPEED TABLE - SECTION A-A**

**CITY OF EUGENE STANDARD DRAWING AMENDMENT**

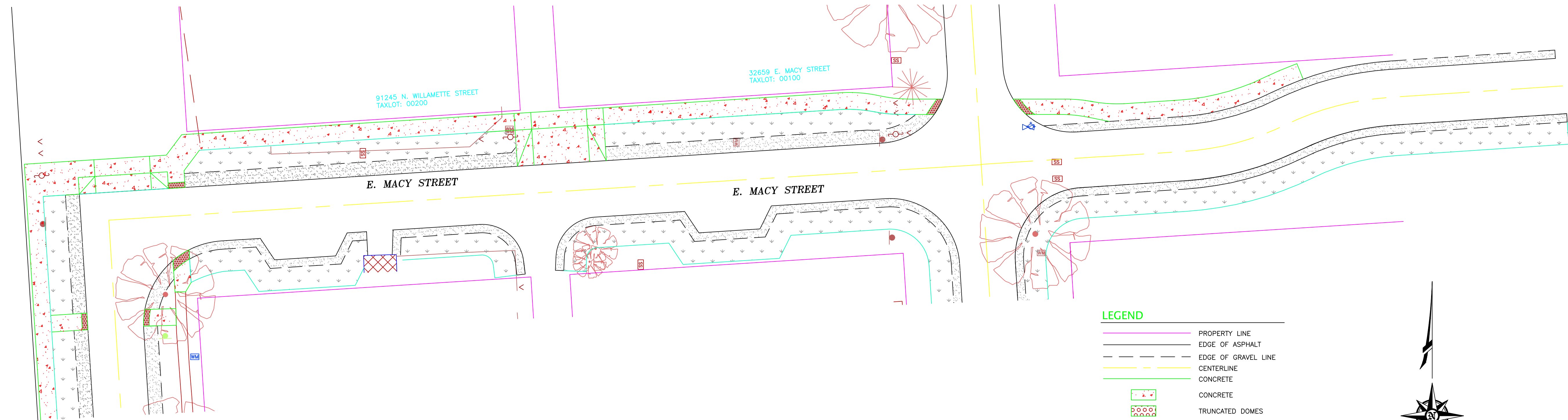
**SPEED CUSHION & SPEED TABLE**

REVISIONS	
DATE	DESCRIPTION
01/17	ADDED SHM DETAIL
08/18	MODIFIED SECTION A-A
01/21	ADDED NOTE 10

TM503B

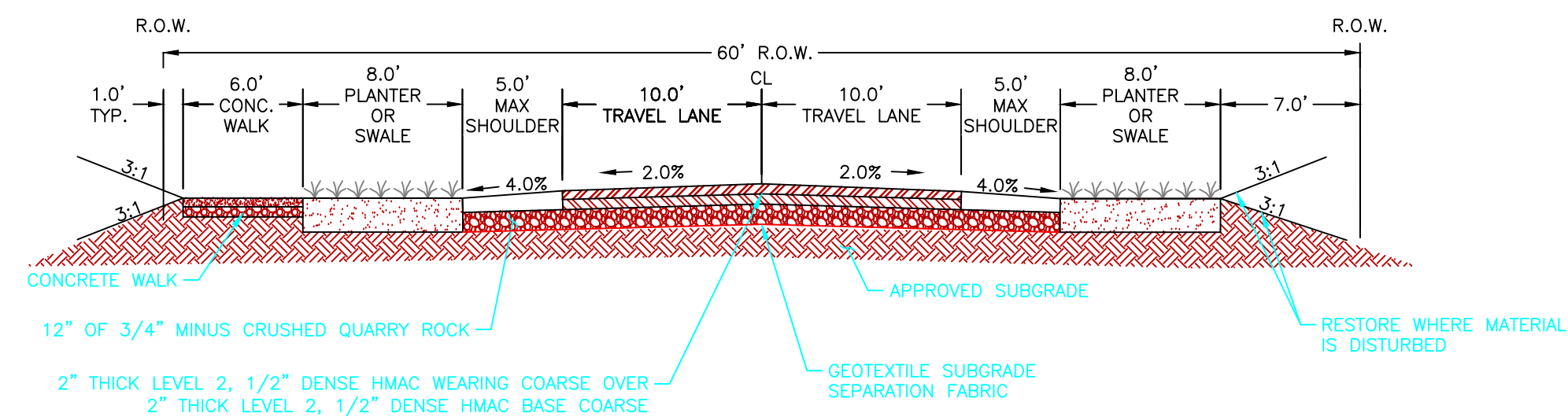
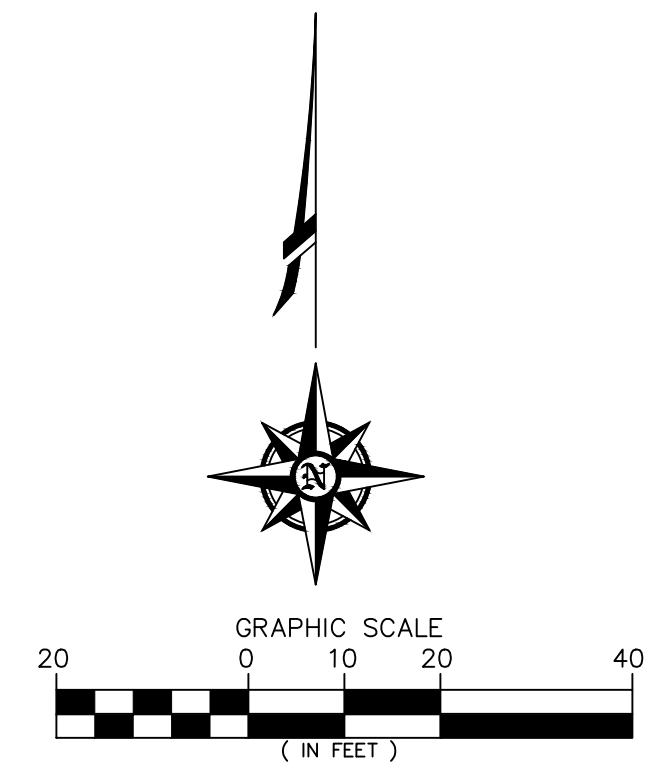
Z:\2021\21-004B\_Coburg\_Improvements\Drawings\21-004B\_Harrison & Macy St\_Speed Cushions.dwg 1/24/2023 5:10 PM JLB

# OPTION B: SIDEWALKS & NO SPEED CUSHIONS

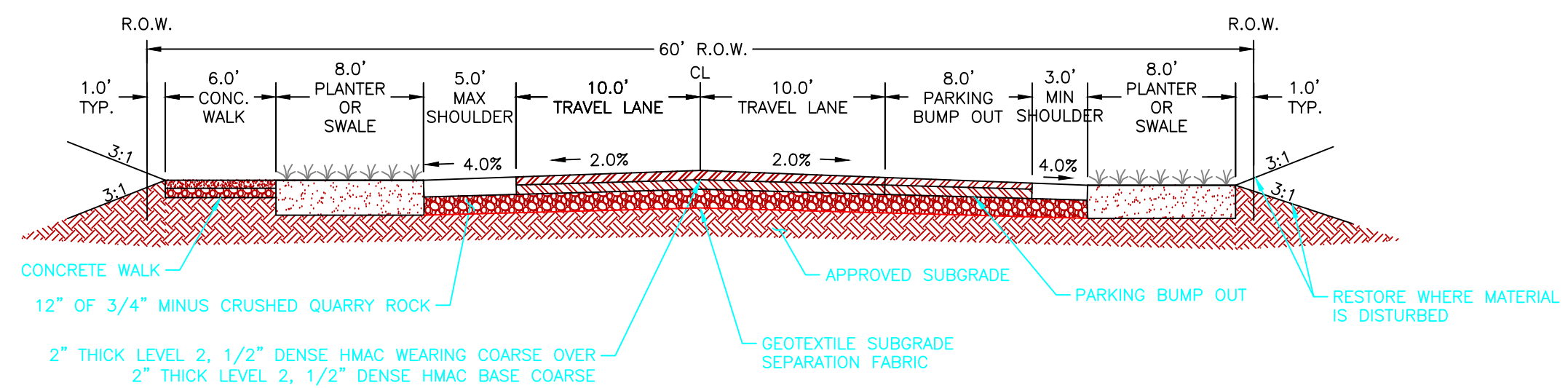


**LEGEND**

	PROPERTY LINE
	EDGE OF ASPHALT
	EDGE OF GRAVEL LINE
	CENTERLINE
	CONCRETE
	CONCRETE
	TRUNCATED DOMES
	GRAVEL SHOULDER
	PLANTER OR SWALE



**E. MACY STREET – TYPICAL SECTION**  
(NOT TO SCALE)



**E. MACY STREET – TYPICAL SECTION AT BUMPOUTS**  
(NOT TO SCALE)

project title:

**N. WILLAMETTE, E. MACY, & N. HARRISON  
STREET IMPROVEMENT OPTIONS**  
CITY OF COBURG  
HARRISON AND MACY STREET  
COBURG, OREGON

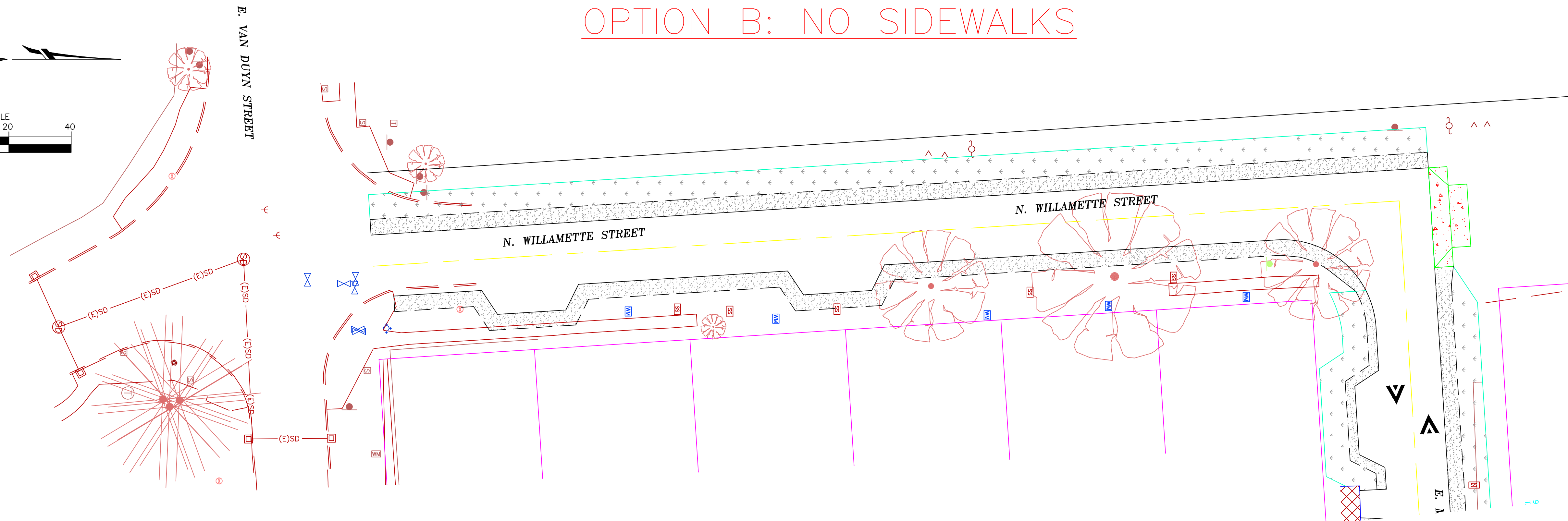
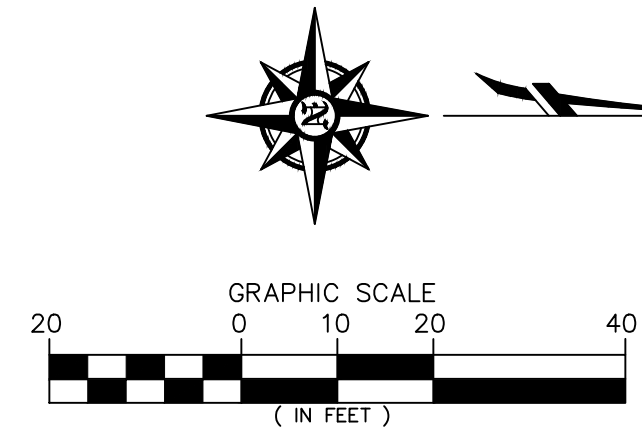
revisions:

date: JANUARY 24, 2023  
drawn by: VJ  
designer: JLB  
project no: 21-004B

**STREET IMPROVEMENTS  
OPTION B**

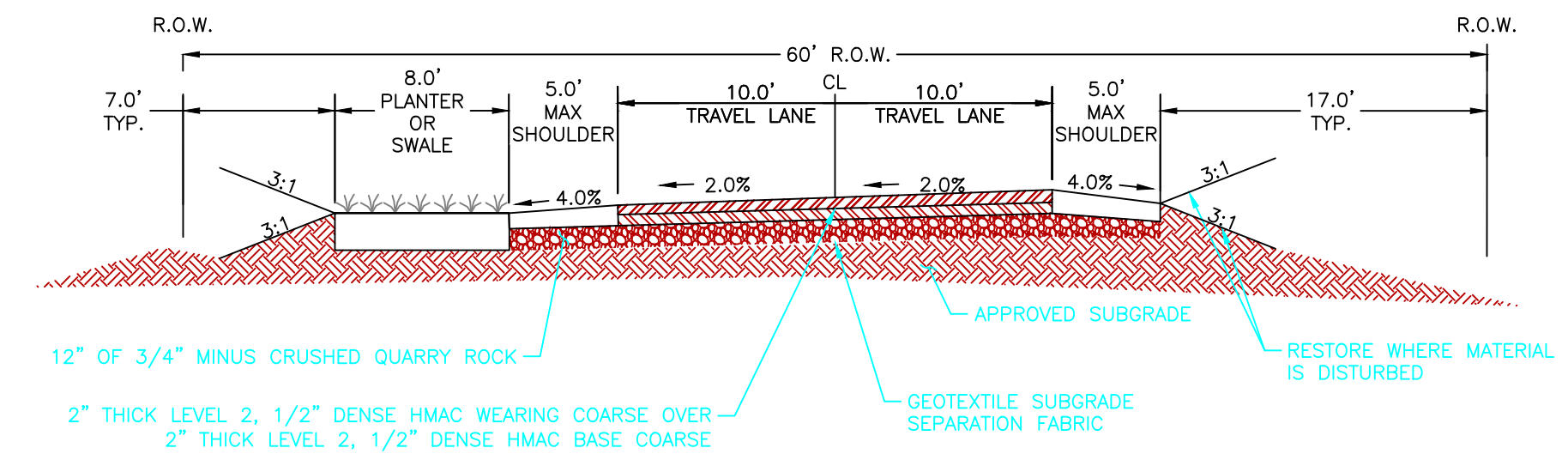
sheet: **C2.0**

# OPTION B: NO SIDEWALKS

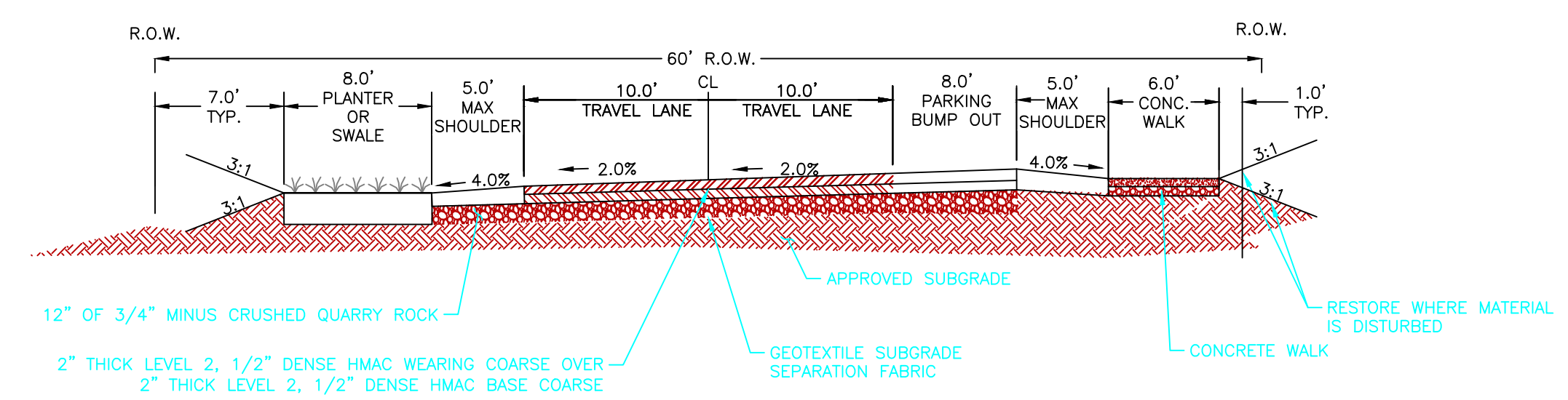


**LEGEND**

	PROPERTY LINE
	EDGE OF ASPHALT
	EDGE OF GRAVEL LINE
	CENTERLINE
	CONCRETE
	CONCRETE
	TRUNCATED DOMES
	GRAVEL SHOULDER
	PLANTER OR SWALE



**N. WILLAMETTE STREET – TYPICAL SECTION**  
 (NOT TO SCALE)



**N. WILLAMETTE STREET – TYPICAL SECTION AT BUMPOUTS**  
 (NOT TO SCALE)

project title:  
**N. WILLAMETTE, E. MACY, & N. HARRISON**  
**STREET IMPROVEMENT OPTIONS**  
 CITY OF COBURG  
 HARRISON AND MACY STREET  
 COBURG, OREGON

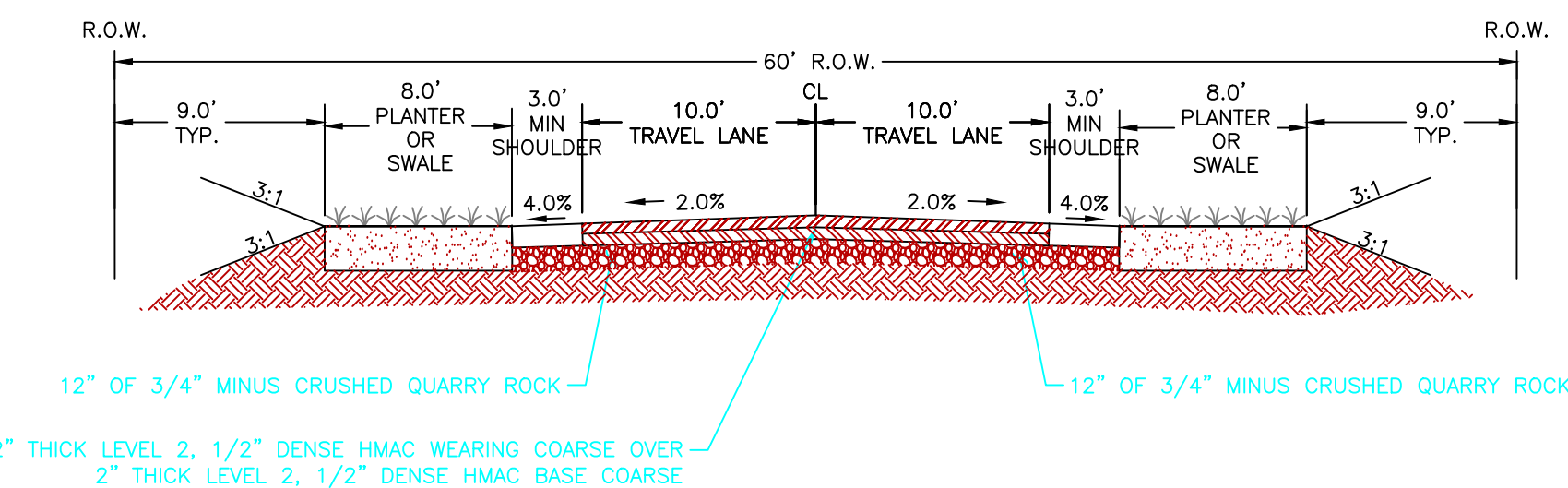
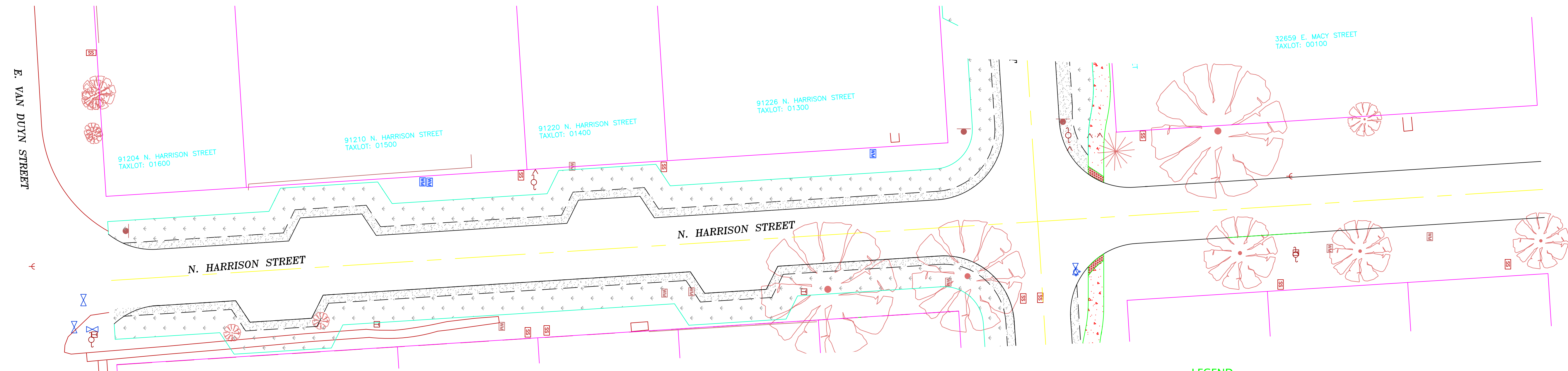
revisions:  
 date: JANUARY 24, 2023  
 drawn by: VJ  
 designer: JLB  
 project no: 21-004B

**STREET IMPROVEMENTS OPTION B**

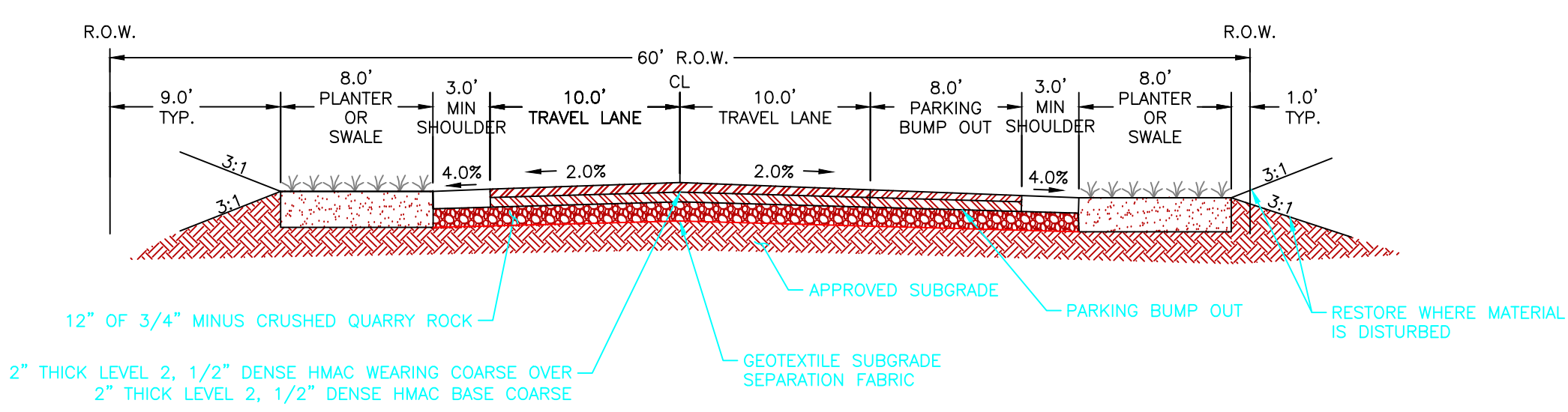
sheet: **C2.1**

Z:\2021\21-004B Coburg Harrison & Macy Street Waterline Replacement\Drawings\21-004B\_Harrison & Macy St\_Speed Options.dwg 1/24/2023 5:10 PM JLB

# OPTION B: NO SPEED CUSHIONS

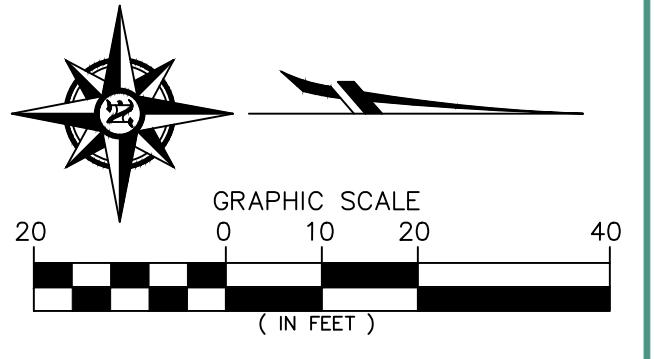


**N. HARRISON STREET – TYPICAL SECTION**  
(NOT TO SCALE)



**N. HARRISON STREET – TYPICAL SECTION AT BUMPOUTS**  
(NOT TO SCALE)

- LEGEND**
- PROPERTY LINE
  - EDGE OF ASPHALT
  - EDGE OF GRAVEL LINE
  - CENTERLINE
  - CONCRETE
  - CONCRETE
  - TRUNCATED DOMES
  - GRAVEL SHOULDER
  - PLANTER OR SWALE



**NOTES:**

- EXACT LOCATIONS WILL BE MARKED IN THE FIELD BY THE ENGINEER.
- TAPER GRIND AS SHOWN OR PAVE OVER PAPER FOR REMOVAL AND FULL STRUCTURE CONSTRUCTION.
- ALL ORGANIC MATERIALS IN CRACKS OR JOINTS SHALL BE REMOVED PRIOR TO PAVING.
- APPLY AN ASPHALT TACK COAT TO COMPLETELY COVER EXISTING SURFACES. BASE PAVING AND VERTICAL SURFACES, IMMEDIATELY PRIOR TO PAVING.
- 1/2" DENSE ACP AND TACK COAT SHALL BE PLACED WHEN THE AVERAGE SURFACE TEMPERATURE IS NOT LESS THAN 40 DEGREES FAHRENHEIT.
- A PROFILE TEMPLATE IS AVAILABLE FROM THE CITY.
- ALL VERTICAL DIMENSIONS SHALL BE CONSIDERED TO +/- 0.25 INCH.
- ACP PAVEMENT SHALL BE COMPACTED TO AT LEAST 92 PERCENT OF THE THEORETICAL DENSITY.
- APPLY AN EMULSIFIED ASPHALT FOG COAT.
- FURNISH LEGENDS WITH BLACK BORDER CONTRAST MARKINGS FOR INSTALLATION OF PCC SURFACES. SPEED HUMP MARKING SHALL HAVE A 3" BORDER.

REVISIONS	
DATE	DESCRIPTION
01/17	ADDED SHM DETAIL
08/18	MODIFIED SECTION A-A
01/21	ADDED NOTE 10

CITY OF EUGENE  
STANDARD DRAWING  
AMENDMENT

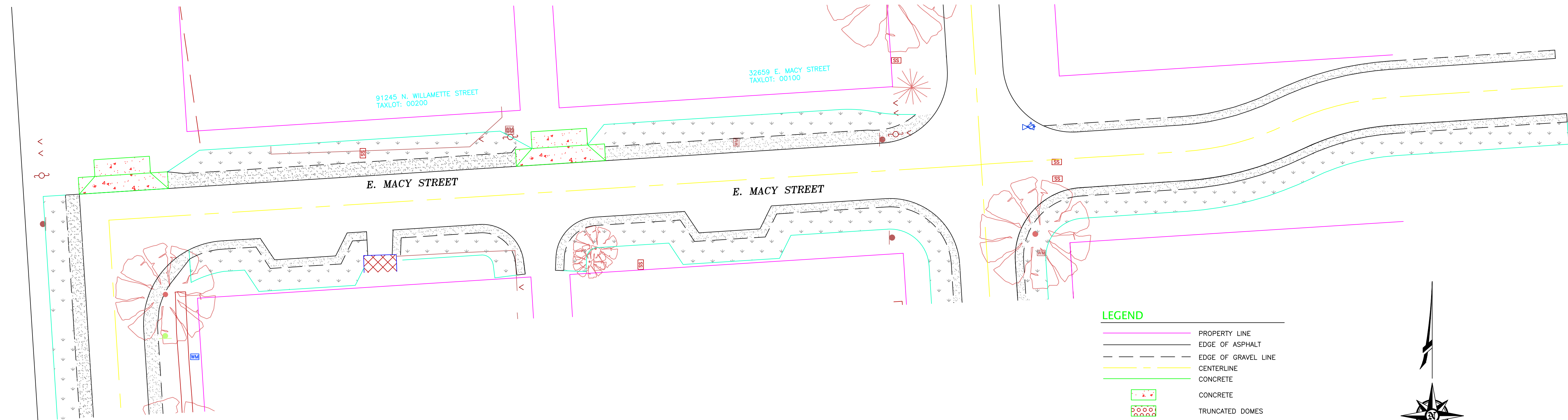
**Eugene**

**SPEED CUSHION & SPEED TABLE**

TM503B

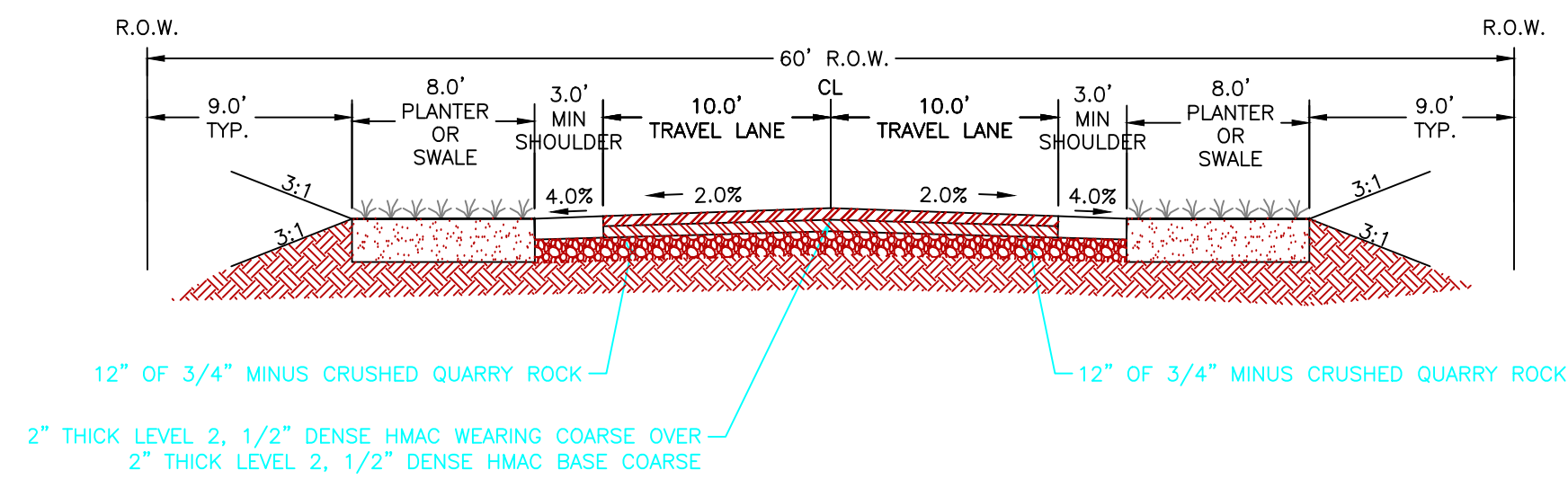
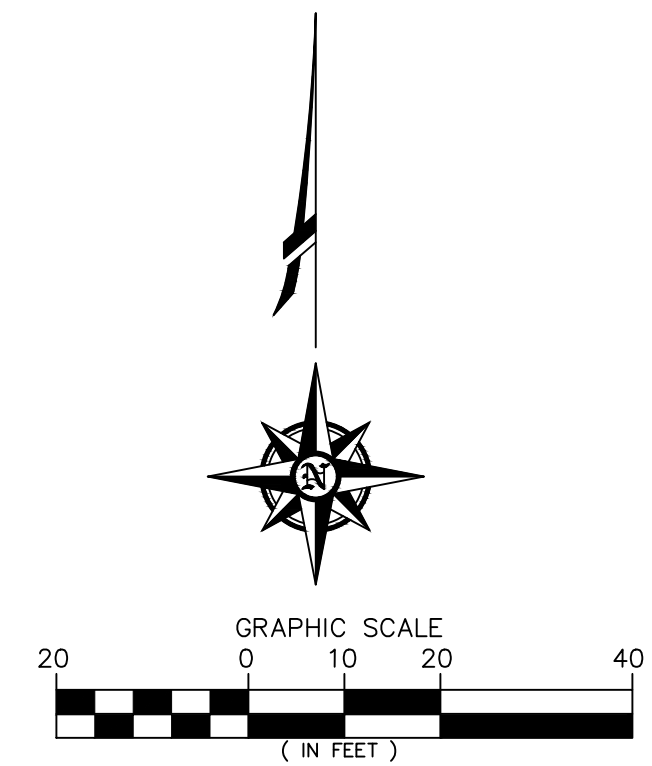
Z:\2021\21-004B\_Coburg\_Improvements\Drawings\21-004B\_Harrison & Macy St\_Speed Cushions.dwg 1/24/2023 5:10 PM JLB

# OPTION C: NO SIDEWALKS & NO SPEED CUSHIONS



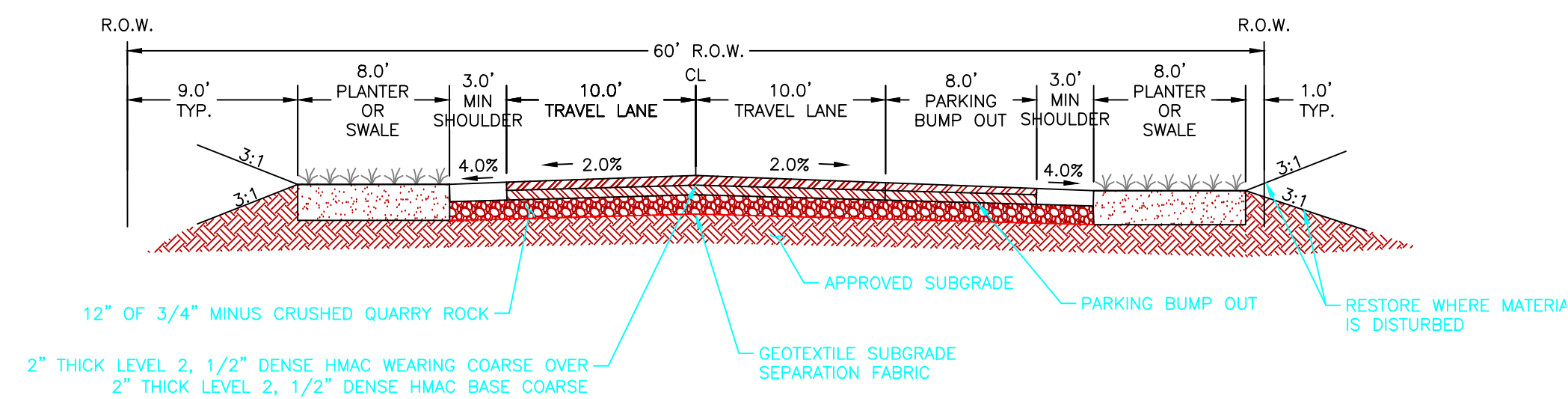
**LEGEND**

	PROPERTY LINE
	EDGE OF ASPHALT
	EDGE OF GRAVEL LINE
	CENTERLINE
	CONCRETE
	CONCRETE
	TRUNCATED DOMES
	GRAVEL SHOULDER
	PLANTER OR SWALE



12" OF 3/4" MINUS CRUSHED QUARRY ROCK  
 2" THICK LEVEL 2, 1/2" DENSE HMAC WEARING COARSE OVER  
 2" THICK LEVEL 2, 1/2" DENSE HMAC BASE COARSE

**E. MACY STREET – TYPICAL SECTION**  
 (NOT TO SCALE)



12" OF 3/4" MINUS CRUSHED QUARRY ROCK  
 APPROVED SUBGRADE  
 GEOTEXTILE SUBGRADE SEPARATION FABRIC  
 PARKING BUMP OUT  
 RESTORE WHERE MATERIAL IS DISTURBED  
 2" THICK LEVEL 2, 1/2" DENSE HMAC WEARING COARSE OVER  
 2" THICK LEVEL 2, 1/2" DENSE HMAC BASE COARSE

**E. MACY STREET – TYPICAL SECTION AT BUMPOUTS**  
 (NOT TO SCALE)

project title:

**N. WILLAMETTE, E. MACY, & N. HARRISON  
 STREET IMPROVEMENT OPTIONS**  
 CITY OF COBURG  
 HARRISON AND MACY STREET  
 COBURG, OREGON

revisions:

date: JANUARY 24, 2023  
 drawn by: VJ  
 designer: JLB  
 project no: 21-004B

**STREET IMPROVEMENTS  
 OPTION C**

sheet: **C3.0**